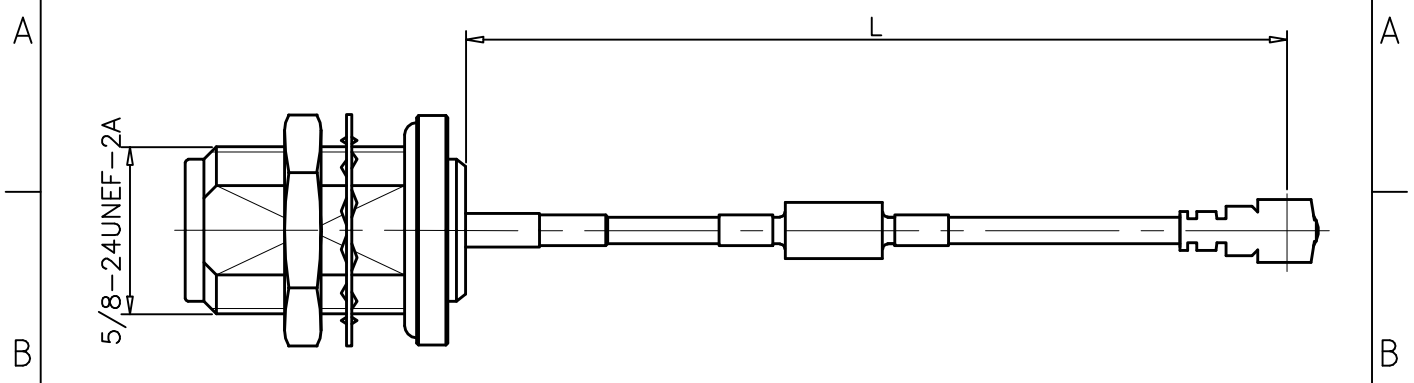


1	2	3	4	
RevNo	Revision note	Date	Signature	Checked
00	Sketch Only	7/2/14	Teresa	Simon



Interface of N connector Per: MIL-C-39012, IEC 60169-16
 Material & Finishing:

- N:
- Center condutor: Phosphor Bronze, Gold Plating
 - Insulators: PTFE
 - Spring Washer: Phosphor Bronze, Gold Plating
 - Body & Other Metal: Brass, Nickel Plating
 - Gasket: Silicone Ribber

- IPX:
- Center condutor: Phosphor Bronze ,Gold Plating
 - Insulators: PTFE
 - Body: Phosphor Bronze, Gold Plating

- Cable:
- Center Conductor: Silver Plated Copper Clad Steel
 - Insulator: PTFE
 - Outer Conductor: Silver Plated Copper Braid
 - Jacket: FEP

Heat Shrink Tube: Polyolefine

- Electrical Data:
- Impedance: 50 Ohms
 - Frequency Range: DC to 3.0 GHz
 - Insulation Resistance: 1000 Megohms
 - Dielectric Withstanding Voltage: 750 V Min.
 - VSWR: ≤ 1.3
 - Insertion Loss: $\leq 2.6\text{dB/M} + 0.2\text{dB}$

ALL DIMENSIONS ARE IN MILLIMETERS AND [INCHES]

KERUI ELECTRONIC CO;LTD

Title N female bulkhead mounted to
 IPX R/A female crimp with RG178 cable
 (toroid)

THESE DRAWING & SPEC. ARE THE
 PROPERTY OF KERUI ELECTRONIC
 CO;LTD AND SHALL NOT BE
 REPRODUCED, OR COPIED OR USED
 AS THE BASIS FOR THE
 MANUFACTURE OR SALE OF
 APPARATUS OR DEVICES WITHOUT
 THEIR EXPRESS WRITTEN CONSENT.

UNLESS OTHERWISE NOTED
 ALL SURFACES FINISHED TO 64/MAX.
 ALL TOLERANCES ARE:
 DECIMALS FRACTIONS ANGLES
 $x \pm 1.0$ $\pm 1/64$ $x' \pm 1'$
 $x.x \pm 0.5$ $x'x' \pm 0.5$
 $x.xx \pm 0.1$

Drawn by Teresa	Ckd by Simon	Appd by Richard	Date 7/2/2014
Scale 1.5:1	Sheet 1 of 1	C802012 14 11 01	